

AVENUE DOWNS - ELLEN II - HOMESITE 206

2932 AVENUE DOWNS DR

Thompson's Station, TN 37179



BARLOW
BUILDERS



SCAN TO LEARN MORE



Elevation

5 Bedroom - 5 Full Baths - Half Bath - Bonus Room
Primary Bedroom and Guest Bedroom and Bath on First Floor
3 Beds, 3 Full Baths, Bonus, and Walk-in Storage on Second Floor
4,266 sq. ft.



*All information deemed accurate but not guaranteed. Pricing, amenities and availability are subject to change without notice. Room sizes, square footage and architectural details may vary.
Copyright © 2025 Barlow Builders Firm ID #262194 - Beth Lewis #305594

Lorraine Mineo - Broker
Barlow Realty, LLC

Cell: (615) 403-1200 Office: (615) 376-1680

Website: BarlowBuilders.com



BARLOW
BUILDERS

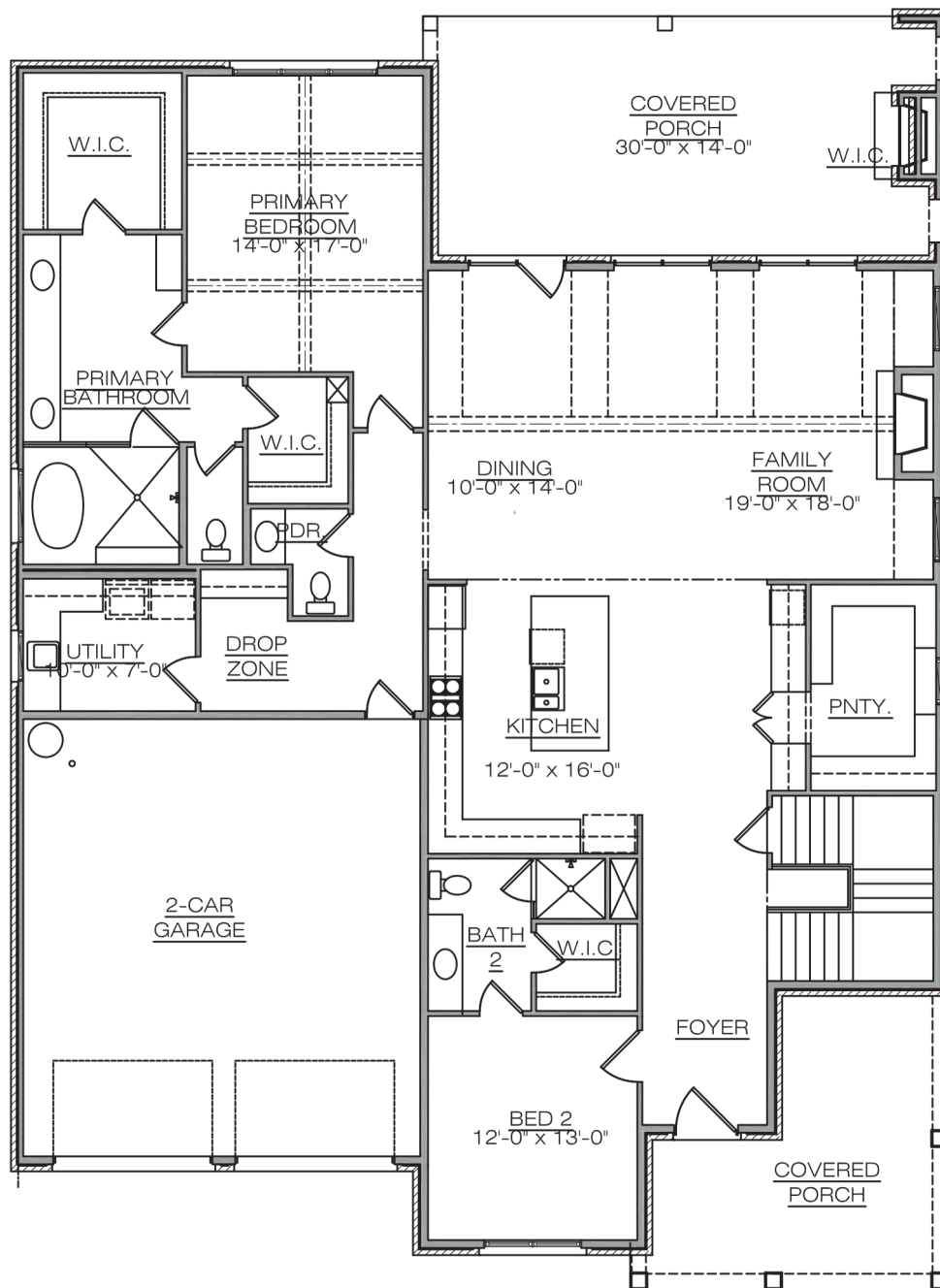
AVENUE DOWNS ELLEN II HOMESITE 206

2932 AVENUEDOWNSDR
Thompson's Station, TN 37179

First Floor
2,517 sq. ft.

5 Bedroom - 5 Full Baths - Half Bath - Bonus Room
Primary Bedroom and Guest Bedroom and Bath on First Floor
3 Beds, 3 Full Baths, Bonus, and Walk-in Storage on Second Floor
4,266 sq. ft.

SCAN TO LEARN MORE



*All information deemed accurate but not guaranteed. Pricing, amenities and availability are subject to change without notice. Room sizes, square footage and architectural details may vary. Copyright © 2025 Barlow Builders Firm ID #262194 -- Beth Lewis #305594

Lorraine Mineo - Broker
Barlow Realty, LLC

Cell: (615) 403-1200 Office: (615) 376-1680
Website: BarlowBuilders.com



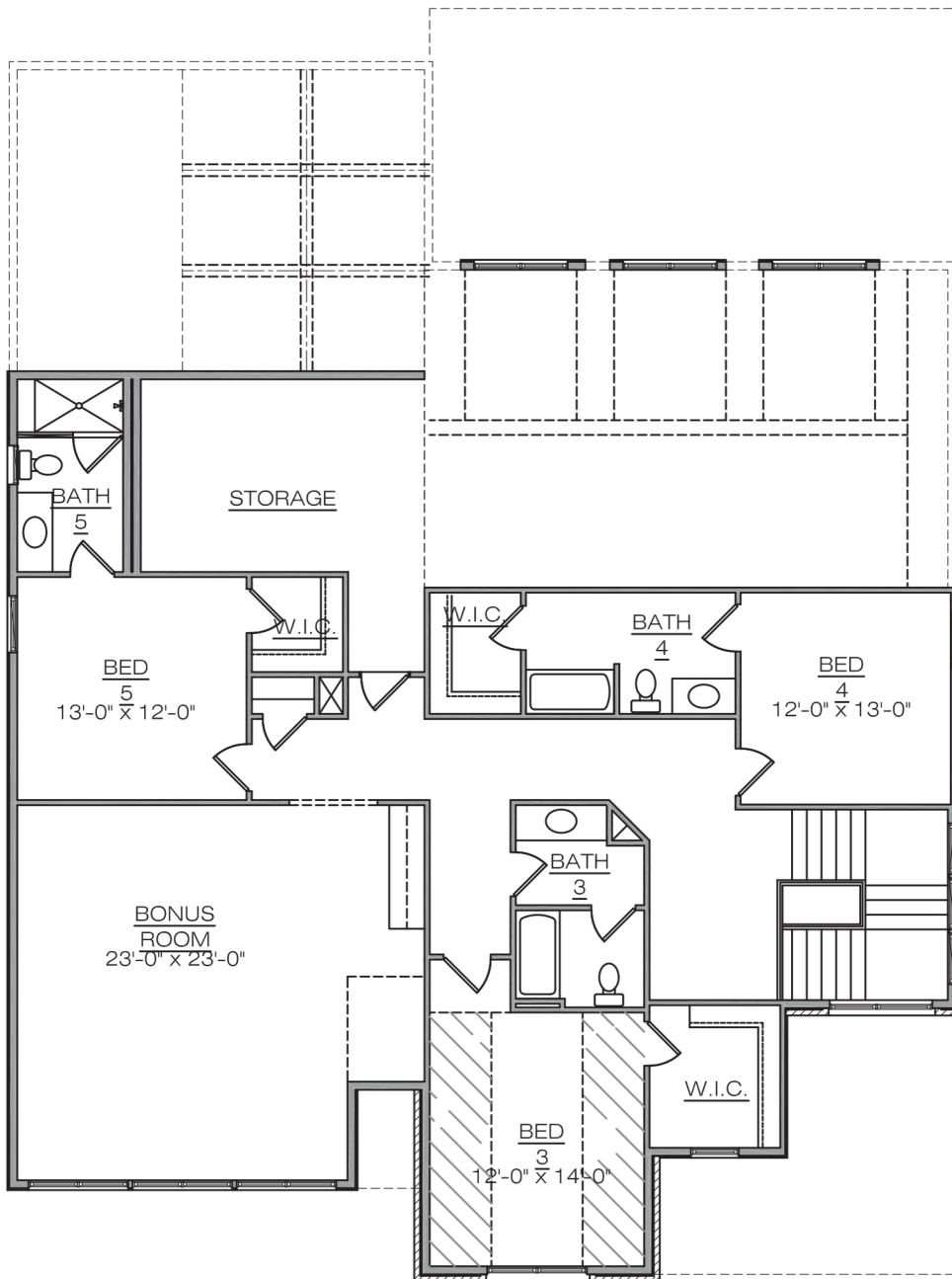
BARLOW
BUILDERS

**AVENUE DOWNS
ELLEN II
HOMESITE 206
2932 AVENUE DOWNS DR
Thompson's Station, TN 37179**

**Second Floor
1,749 sq. ft.**

5 Bedroom - 5 Full Baths - Half Bath - Bonus Room
Primary Bedroom and Guest Bedroom and Bath on First Floor
3 Beds, 3 Full Baths, Bonus, and Walk-in Storage on Second Floor
4,266 sq. ft.

SCAN TO LEARN MORE



*All information deemed accurate but not guaranteed. Pricing, amenities and availability are subject to change without notice. Room sizes, square footage and architectural details may vary. Copyright © 2025 Barlow Builders Firm ID #262194 - Beth Lewis #305594

Lorraine Mineo - Broker
Barlow Realty, LLC

Cell: (615) 403-1200 Office: (615) 376-1680
Website: BarlowBuilders.com