

# AVENUE DOWNS - CHELSEA - HOMESITE 203

2920 AVENUE DOWNS DR

Thompson's Station, TN 37179



**BARLOW**  
BUILDERS



SCAN TO LEARN MORE



## Elevation

4 Bedroom - 4 Full Baths - 2 Half Baths - Bonus Room  
Primary Bedroom, Study, and Guest Bedroom and Bath  
on First Floor 2 Beds, 2.5 Baths, Bonus, and Walk-in  
Storage on Second Floor 4,427 sq. ft.



\*All information deemed accurate but not guaranteed. Pricing, amenities and availability are subject to change without notice. Room sizes, square footage and architectural details may vary. Copyright © 2025 Barlow Builders Firm ID #262194 - Beth Lewis #305594

**Lorraine Mineo - Broker**  
Barlow Realty, LLC

Cell: (615) 403-1200 Office: (615) 376-1680

Website: BarlowBuilders.com



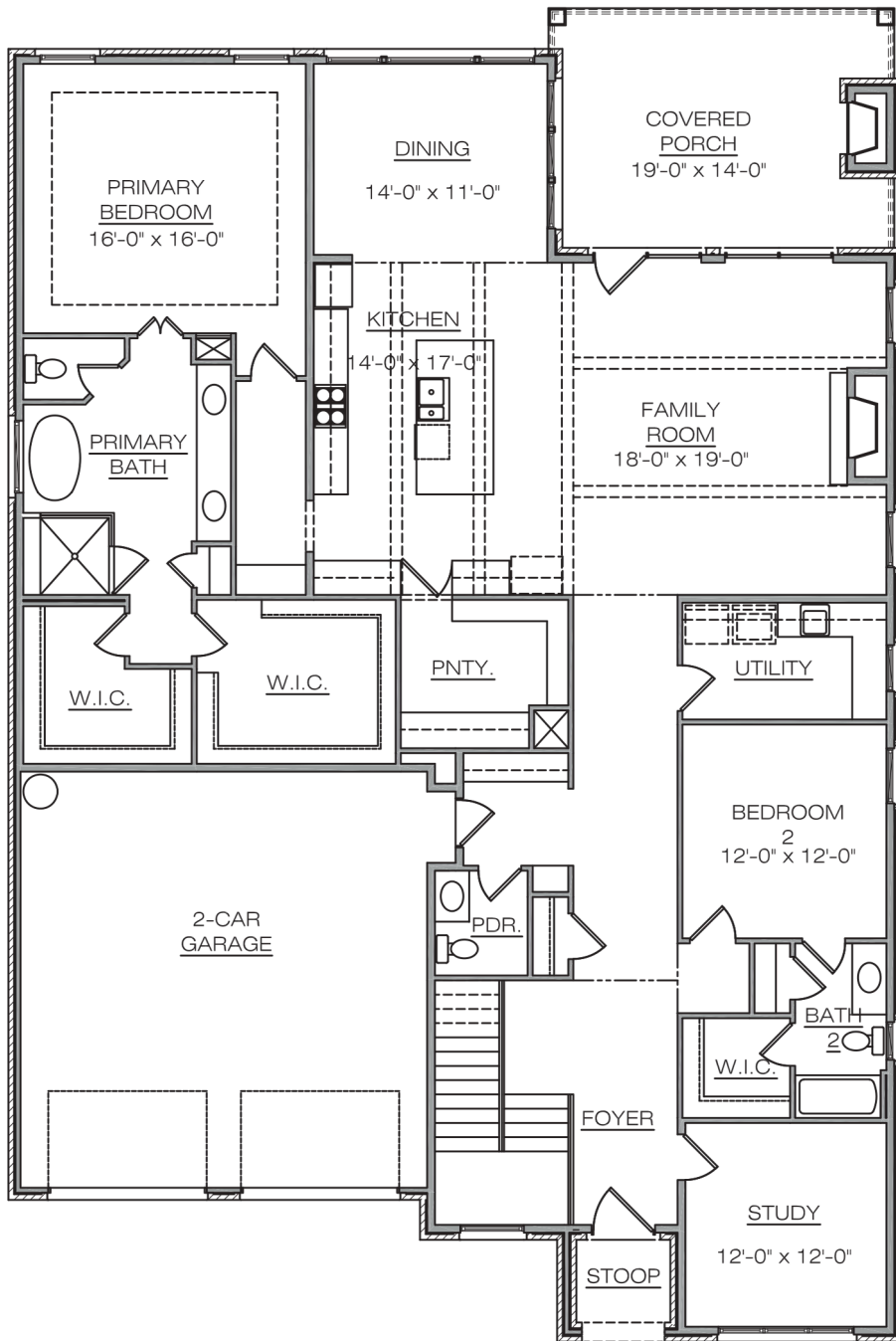
**BARLOW**  
BUILDERS

# AVENUE DOWNS CHELSEA HOMESITE 203 2920 AVENUEDOWNSDR Thompson's Station, TN 37179

**First Floor**  
2,806 sq. ft.

4 Bedroom - 4 Full Baths - 2 Half Baths - Bonus Room  
Primary Bedroom, Study, and Guest Bedroom and Bath on First Floor  
2 Beds, 2.5 Baths, Bonus, and Walk-in Storage on Second Floor  
4,427 sq. ft.

SCAN TO LEARN MORE



\*All information deemed accurate but not guaranteed. Pricing, amenities and availability are subject to change without notice. Room sizes, square footage and architectural details may vary. Copyright © 2025 Barlow Builders Firm ID #262194 - Beth Lewis #305594

**Lorraine Mineo - Broker**  
Barlow Realty, LLC

Cell: (615) 403-1200 Office: (615) 376-1680  
Website: BarlowBuilders.com

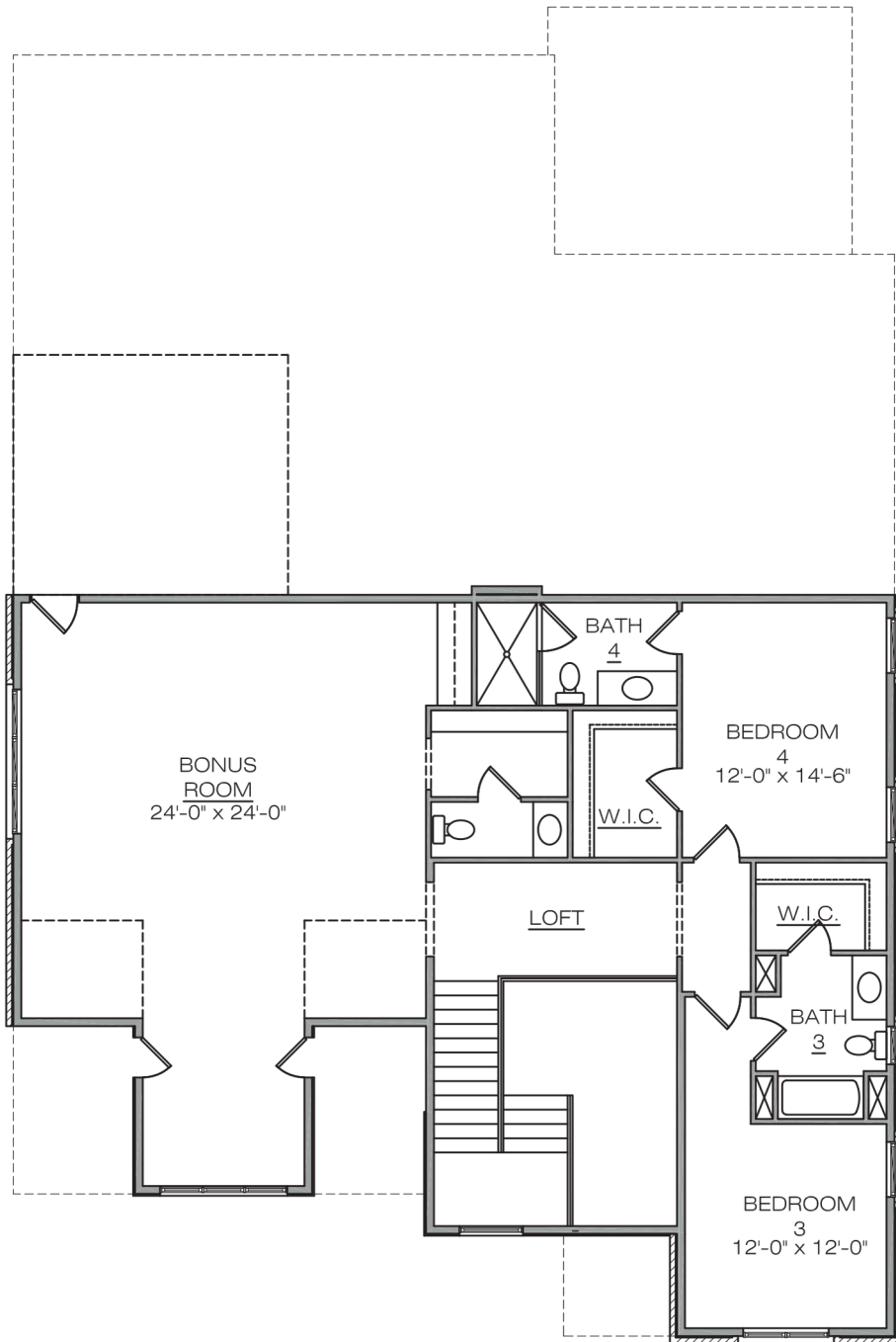


**AVENUE DOWNS  
CHELSEA  
HOMESITE 203  
2920 AVENUE DOWNS DR  
Thompson's Station, TN 37179**

**Second Floor  
1,621 sq. ft.**

4 Bedroom - 4 Full Baths - 2 Half Baths - Bonus Room  
Primary Bedroom, Study, and Guest Bedroom and Bath on First Floor  
2 Beds, 2.5 Baths, Bonus, and Walk-in Storage on Second Floor  
4,427 sq. ft.

**SCAN TO LEARN MORE**



\*All information deemed accurate but not guaranteed. Pricing, amenities and availability are subject to change without notice. Room sizes, square footage and architectural details may vary. Copyright © 2025 Barlow Builders Firm ID #262194 - Beth Lewis #305594

**Lorraine Mineo - Broker**  
Barlow Realty, LLC

Cell: (615) 403-1200 Office: (615) 376-1680  
Website: BarlowBuilders.com